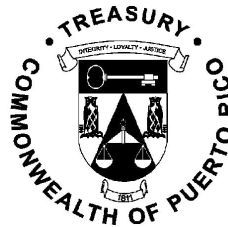


**Commonwealth of Puerto Rico  
Department of the Treasury**

**PUBLICATION 09-01**

**INTERFACE TECHNICAL MANUAL FOR  
ELECTRONIC TAX INFORMATION EXCHANGE (E-TIE)  
FOR TAX YEAR 2008**

**January 27, 2009**



# Table of Contents

|     |  |    |
|-----|--|----|
| 1.  | Introduction and General Information ..... | 1  |
| 1.1 | Introduction.....                          | 1  |
| 1.2 | Background .....                           | 1  |
| 1.3 | Intended Audience .....                    | 1  |
| 1.4 | Assumptions .....                          | 1  |
| 1.5 | Standards .....                            | 1  |
| 1.6 | URL's.....                                 | 2  |
| 2.  | E-TIE Guide.....                           | 3  |
| 2.1 | Intended Users and Operations .....        | 3  |
| 2.2 | E-TIE Functionality.....                   | 3  |
| 2.3 | Transaction Summary .....                  | 4  |
| 2.4 | Login.....                                 | 4  |
| 2.5 | Upload .....                               | 7  |
| 2.6 | Citizen Registration.....                  | 8  |
| 2.7 | Citizen PIN Registration .....             | 13 |
| 3.  | E-TIE VB.Net Implementation Example .....  | 17 |
| 3.1 | Login and Upload .....                     | 17 |
| 4.  | Tables.....                                | 19 |
| 4.1 | Response Codes.....                        | 19 |

# **1. Introduction and General Information**

---

## **1.1 Introduction**

The Electronic Tax Information Exchange (E-TIE) Interface Technical Manual document defines a public XML schema for performing a limited set of individual and corporate taxpayers and third party transmitter transactions. The schema defines a unique request and response XML element for each transaction. This document discusses the transactions and their associated schema elements.

## **1.2 Background**

Currently taxpayers interact with the Department of the Treasury's (Department) system through a combination of paper forms, flat file transfers and custom-made dial-up applications. E-TIE increases the functionality of data exchange by providing an XML based interface for interaction with existing Department's systems using the Internet.

The E-TIE XML schema library provides a vocabulary for invoking E-TIE functionality; essentially a series of requests and associated responses using SOAP.

## **1.3 Intended Audience**

This document is meant to be accessible to software developers as well as technical system reader who will be developing applications that will utilize E-TIE.

## **1.4 Assumptions**

It is assumed that the readers of this document have some familiarity with XML and XML schema.

## **1.5 Standards**

### **1.5.1 Services**

The IPS is implemented as a "Web" service that conforms to the WS-I basic profile (see <http://www.ws-i.org/Profiles/BasicProfile-1.1-2004-08-24.html>) and supports SOAP.

The schemas conform to the W3C standards and recommendations.

## 1.5.2 Schema

The E-TIE XML schema library uses a global namespace: **<http://www.hacienda.gobierno.pr/schemas>**. The schema is contained in one document that includes simple XML types, complex XML types, and the XML elements that represent request and response transactions.

## 1.5.3 Transport

Transactions take place over HTTPS.

## 1.6 URL's

### 1.6.1 XML Validator (Test)

The address for testing the scheme validation for an XML document is **<http://64.185.194.12/etiexmlvalidator/validator.aspx>**

### 1.6.2 E-TIE Certification Environment

The address to test the communication between your software and E-TIE is **<http://64.185.194.12/etieservices/etieservices.asmx>**

### 1.6.3 E-TIE Production Environment

The production address for E-TIE is **<https://hws.hacienda.gobierno.pr/etieservices/etieservices.asmx>**

## 2. E-TIE Guide

### 2.1 Intended Users and Operations

E-TIE is designed to be used by software developers/vendors. Taxpayers use the E-TIE through a third-party software intermediary, which in turn must be properly certified by the Department.

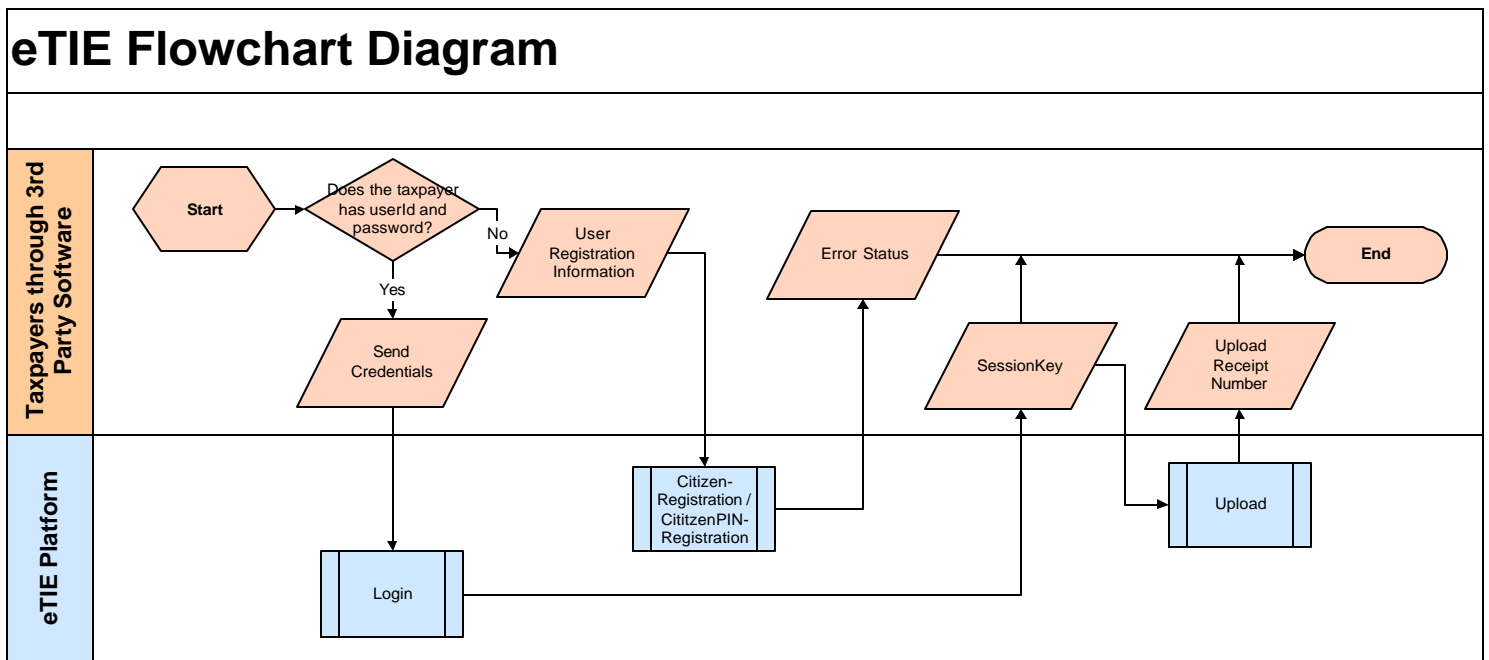
Third party software transmitters may use E-TIE for the following functions:

- Login;
- Upload (will be limited by form type);
- CitizenRegistration (only valid for third party software); and
- CitizenPINRegistration (only valid for third party software).

Future transactions will be available, including payments and general utilities.

### 2.2 E-TIE Functionality

The basic functionality of E-TIE as described by the E-TIE/XML schema is shown below:



## 2.3 Transaction Summary

| Transaction                | Request XML Element<br>Response XML Element     | Authentication | Timing      |
|----------------------------|---|----------------|-------------|
| Login                      | EtieLogin<br>LoginResult                        | Required       | Synchronous |
| Upload                     | XmlDocument<br>UploadResult                     | Required       | Synchronous |
| Citizen<br>Registration    | UserInformation<br>CitizenRegistrationResult    | Required       | Synchronous |
| CitizenPIN<br>Registration | UserInformation<br>CitizenPINRegistrationResult | Required       | Synchronous |

## 2.4 Login

Authentication is the first step required to perform any subsequent action. The login process verifies the credentials at the software developer/vendor level, the software product level and the user level.

The user is defined as the person that is login to the software when the transmission between the third party software and E-TIE takes place.

### 2.4.1 Individuals

The software must provide a registration screen where the taxpayer will enter the authenticated user name and password used in prior years for Tax Returns Online (“Planillas En Línea”). In addition, a screen must also be provided for taxpayers who do not have an authenticated user name and password. In these cases, the software screen must also provide to enter the information required in either Section 2.7 or Section 2.8. The Department will first validate if the taxpayer has filed the previous year return or not. If the previous year return has been filed, the additional information will be validated against the database and the user name and password will be authenticated. If the previous year return has not been filed, the Department will return the corresponding code and the login session will end. Please refer to the Response Code Table for the related message.

### 2.4.2 Tax Return Specialists

The software must provide a screen where the Tax Return Specialist will enter the authenticated user name and password provided by the Department. If the user name and password is not valid or is inactive, a code will be returned. Please refer to the Response Code Table for the related message.

## 2.4.3 ETIELogin

```
<?xml version="1.0" encoding="utf-8"?>
<soap:Envelope xmlns:xsi="http://www.w3.org/2001/XMLSchema-instance"
xmlns:xsd="http://www.w3.org/2001/XMLSchema"
xmlns:soap="http://schemas.xmlsoap.org/soap/envelope/">
  <soap:Body>
    <Login
xmlns="http://etie.hacienda.gobierno.pr/EtieServices/EtieServices">
      <EtieLogin>
        <SoftwareVendorId>ACME Soft</SoftwareVendorId>
        <SoftwareVendorPassword>abcde0999</SoftwareVendorPassword>
        <SoftwareName>Tax Soft</SoftwareName>
        <SoftwareVersion>1.0</SoftwareVersion>
        <SoftwareCertificate>xswyhn9a</SoftwareCertificate>
        <FormVersion>ShortForm2008</FormVersion>
        <UserId>juandelpueblo</UserId>
        <UserPassword>bluehouse</UserPassword>
      </EtieLogin>
    </Login>
  </soap:Body>
</soap:Envelope>
```

| Field                  | Description   | Type   |
|------------------------|---|--------|
| SoftwareVendorID       | The company name as registered in the Department.   | String |
| SoftwareVendorPassword | The password provided by the Department when registered.  | String |
| SoftwareName           | The software name registered in the Department.   | String |
| SoftwareVersion        | The software version registered and certified by the Department.  | String |
| SoftwareCertificate    | The certificate number issued by the Department for each software version and form combination.             | String |
| FormVersion            | The form name that relates to the XML document to be transmitted.   | String |
| UserId                 | User name as registered in Tax Returns Online (Planillas En Línea) or Payments Online (Colecturía Virtual). | String |
| UserPassword           | Password associated to the user name.   | String |

## 2.4.4 Login Response

```
<?xml version="1.0" encoding="utf-8"?>
<soap:Envelope xmlns:xsi="http://www.w3.org/2001/XMLSchema-instance"
xmlns:xsd="http://www.w3.org/2001/XMLSchema"
xmlns:soap="http://schemas.xmlsoap.org/soap/envelope/">
  <soap:Body>
    <LoginResponse
xmlns="http://etie.hacienda.gobierno.pr/EtieServices/EtieServices">
      <LoginResult>
        <ResponseCode>int</ResponseCode>
        <ResponseMessage>string</ResponseMessage>
        <SessionKey>string</SessionKey>
        <Expiration>dateTime</Expiration>
        <SessionRole>string</SessionRole>
        <UserType>string</UserType>
        <UserName>string</UserName>
      </LoginResult>
    </LoginResponse>
  </soap:Body>
```

| Field           | Description  | Type     |
|-----------------|--|----------|
| ResponseCode    | See Response Code Table.   | Int      |
| ResponseMessage | See Response Code Table.   | String   |
| SessionKey      | Security token to be used for subsequent requests within this session.<br><b>Note:</b> This value will be encrypted.               | String   |
| Expiration      | States when the SessionKey expires.<br><b>Note:</b> This value will be encrypted.  | DateTime |
| SessionRole     | For the Department internal use. Must be returned with Upload and Download requests.<br><b>Note:</b> This value will be encrypted. | String   |
| UserType        | Type of user that is submitting the data (this value is given by the Login method).  | String   |
| UserName        | User name that is submitting the data (this value is given by the Login method).   | String   |



## 2.5 Upload

The upload process will transmit one instance of the Form mentioned in the Login process. For each successful received and validated transmission, E-TIE will issue a unique confirmation number.

### 2.5.1 XmlDocument

```
<?xml version="1.0" encoding="utf-8"?>
<soap:Envelope xmlns:xsi="http://www.w3.org/2001/XMLSchema-instance"
xmlns:xsd="http://www.w3.org/2001/XMLSchema"
xmlns:soap="http://schemas.xmlsoap.org/soap/envelope/">
  <soap:Header>
    <AuthHeader
xmlns="http://etie.hacienda.gobierno.pr/EtieServices/EtieServices">
      <SessionKey>string</SessionKey>
      <SessionRole>string</SessionRole>
      <UserType>string</UserType>
      <UserName>string</UserName>
    </AuthHeader>
  </soap:Header>
  <soap:Body>
    <Upload
xmlns="http://etie.hacienda.gobierno.pr/EtieServices/EtieServices">
      <UploadXmlDocument>string</UploadXmlDocument>
    </Upload>
  </soap:Body>
</soap:Envelope>
```

| Field             | Description  | Type         |
|-------------------|--|--------------|
| SessionKey        | Value provided by LoginResult.<br><b>Note:</b> This value will be encrypted.                                     | String       |
| SessionRole       | Value provided by LoginResult.<br><b>Note:</b> This value will be encrypted.                                     | String       |
| UserType          | Value provided by LoginResult.   | String       |
| UserName          | Value provided by LoginResult.   | String       |
| UploadXmlDocument | Instance of the form mentioned in the LoginRequest. The content will be validated against its corresponding XSD. | XML Document |

## 2.5.2 Upload Response

```
<?xml version="1.0" encoding="utf-8"?>
<soap:Envelope xmlns:xsi="http://www.w3.org/2001/XMLSchema-instance"
xmlns:xsd="http://www.w3.org/2001/XMLSchema"
xmlns:soap="http://schemas.xmlsoap.org/soap/envelope/">
  <soap:Body>
    <UploadResponse
xmlns="http://etie.haciedna.gobierno.pr/EtieServices/EtieServices">
      <UploadResult>
        <ResponseCode>0</ResponseCode>
        <ResponseMessage></ResponseMessage>
        <ReceiptNumber>2008001gyter4546010198f</ReceiptNumber>
      </UploadResult>
    </UploadResponse>
  </soap:Body>
</soap:Envelope>
```

| Field           | Description  | Type   |
|-----------------|--|--------|
| ResponseCode    | See Response Code Table.   | Int    |
| ResponseMessage | See Response Code Table.   | String |
| ReceiptNumber   | A unique confirmation number that serves as evidence that the form instance was successfully received and validated by the Department.<br>Null if the Upload was unsuccessful. | String |

## 2.6 Citizen Registration

This service must be used for taxpayers that do not have a registered user name or password in Tax Returns Online (“Planillas En Línea”) or Payments Online (“Colecturía Virtual”). If the taxpayer has a registered user name and password in Payments Online (“Colecturía Virtual”) and the authentication information complies with the Department’s records, the taxpayer’s user privileges will be upgraded.

Authentication parameters are requested for the software vendor and software version, exactly as they are required in the Login process. Only software certificates issued to handle forms filed by Tax Return Specialist will not be granted permission to access this functionality.

## 2.6.1 UserInformation

```
<?xml version="1.0" encoding="utf-8"?>
<soap:Envelope xmlns:xsi="http://www.w3.org/2001/XMLSchema-instance"
xmlns:xsd="http://www.w3.org/2001/XMLSchema"
xmlns:soap="http://schemas.xmlsoap.org/soap/envelope/">
  <soap:Body>
    <CitizenRegistration
xmlns="http://etie.hacienda.gobierno.pr/EtieServices/EtieServices">
      <UserInformation>
        <Name>string</Name>
        <LastName>string</LastName>
        <SecondLastName>string</SecondLastName>
        <SocialSecurity>string</SocialSecurity>
        <UserName>string</UserName>
        <Password>string</Password>
        <HomeLine1>string</HomeLine1>
        <HomeLine2>string</HomeLine2>
        <HomeState>string</HomeState>
        <HomeCity>string</HomeCity>
        <HomeZip5>string</HomeZip5>
        <HomeZip4>string</HomeZip4>
        <PostalLine1>string</PostalLine1>
        <PostalLine2>string</PostalLine2>
        <PostalCity>string</PostalCity>
        <PostalState>string</PostalState>
        <PostalZip5>string</PostalZip5>
        <PostalZip4>string</PostalZip4>
        <Phone>string</Phone>
        <Fax>string</Fax>
        <Email>string</Email>
        <TaxDetermined>decimal</TaxDetermined>
        <Refund>boolean</Refund>
        <RefundAmount>decimal</RefundAmount>
        <SoftwareVendorId>string</SoftwareVendorId>
        <SoftwareVendorPassword>string</SoftwareVendorPassword>
        <SoftwareCertificate>string</SoftwareCertificate>
      </UserInformation>
    </CitizenRegistration>
  </soap:Body>
</soap:Envelope>
```

| <b>Field</b>           | <b>Description</b>   | <b>Type</b> |
|------------------------|--|-------------|
| SoftwareVendorID       | The company name as registered in the Department of Treasury.  | String      |
| SoftwareVendorPassword | The password provided by the Department of Treasury when registered.   | String      |
| SoftwareCertificate    | The certificate number issued by the Department of Treasury for each software version and form combination.  | String      |
| Name                   | The taxpayer's first name as it was submitted in the previous tax year return.   | String      |
| LastName               | The taxpayer's last name as it was submitted in the previous tax year return.  | String      |
| SecondLastName         | The taxpayer's second last name (Mother's maiden name) as it was submitted in the previous tax year return..   | String      |
| SocialSecurity         | The taxpayer's social security number.   | String      |
| PostalLine1            | The postal address first line.<br>Address Line 1 is used to provide an apartment or suite number, if applicable. If not applicable, include the open and close tag with no input.<br>Maximum characters allowed: 40      | String      |
| PostalLine2            | The postal address second line.<br>Street address.<br>Maximum characters allowed: 40   | String      |
| PostalCity             | The postal address City name.<br>Maximum characters allowed: 20  | String      |
| PostalState            | The postal address State.<br>Maximum characters allowed: 2   | String      |
| PostalZip5             | The postal address zip code.<br>Maximum characters allowed: 5  | String      |
| PostalZip4             | The postal address zip+4.<br>Maximum characters allowed: 4   | String      |
| HomeLine1              | The residential address first line.<br>Address Line 1 is used to provide an apartment or suite number, if applicable. If not applicable, include the open and close tag with no input.<br>Maximum characters allowed: 40 | String      |
| HomeLine2              | The residential address second line.<br>Street address.<br>Maximum characters allowed: 40  | String      |
| HomeCity               | The residential address City name.<br>Maximum characters allowed: 20   | String      |
| HomeState              | The residential address State.<br>Maximum characters allowed: 2  | String      |

| Field         | Description   | Type    |
|---------------|---|---------|
| HomeZip5      | The residential address zip code.<br>Maximum characters allowed: 5  | String  |
| HomeZip4      | The residential address zip+4.<br>Maximum characters allowed: 4   | String  |
| Phone         | The taxpayer's phone number, including area code.   | String  |
| Fax           | The taxpayer's fax number, including area code.   | String  |
| Username      | The user name registered in the Department of Treasury.   | String  |
| UserPassword  | The password associated to the user name.   | String  |
| Email         | The taxpayer's e-mail address. It will be used to communicate with the taxpayer.                                  | String  |
| TaxDetermined | The amount of tax determined in the previous tax year.  | Decimal |
| Refund        | Indicate if the taxpayer received a refund in the previous tax year.  | Boolean |
| RefundAmount  | The amount of refund received by the taxpayer in the previous tax year.<br>Value must be zero if Refund is False. | Decimal |

**Note:** For United States Postal Service addressing standards please refer to Publication 28 (<http://pe.usps.gov/text/pub28/welcome.htm>).

## 2.6.2 Citizen Registration Response

```
<?xml version="1.0" encoding="utf-8"?>
<soap:Envelope xmlns:xsi="http://www.w3.org/2001/XMLSchema-instance"
xmlns:xsd="http://www.w3.org/2001/XMLSchema"
xmlns:soap="http://schemas.xmlsoap.org/soap/envelope/">
  <soap:Body>
    <CitizenRegistrationResponse
xmlns="http://etie.hacienda.gobierno.pr/EtieServices/EtieServices">
      <CitizenRegistrationResult>
        <ResponseCode>string</ResponseCode>
        <ResponseMessage>string</ResponseMessage>
        <ReceiptNumber>string</ReceiptNumber>
      </CitizenRegistrationResult>
    </CitizenRegistrationResponse>
  </soap:Body>
</soap:Envelope>
```

| Field           | Description   | Type   |
|-----------------|---|--------|
| ResponseCode    | See Response Code Table.  | Int    |
| ResponseMessage | See Response Code Table.  | String |
| ReceiptNumber   | A unique confirmation number that serves as evidence that the registration was completed.<br>Null if the Registration was unsuccessful. | String |

## 2.7 Citizen PIN Registration

This service must be used for taxpayers that do not have a registered user name or password in Tax Returns Online (“Planillas En Línea”) or Payments Online (“Colecturía Virtual”). If the taxpayer has a registered user name and password in Payments Online (“Colecturía Virtual”) and the authentication information complies with the Department’s records, the taxpayer’s user privileges will be upgraded.

Authentication parameters are requested for the software vendor and software version, exactly as they are required in the Login process. Only software certificates issued to handle forms filed by Tax Return Specialist will not be granted permission to access this functionality. This method differs from the CitizenRegistration from the fact that the taxpayer must use a PIN Number assigned by the Department of Treasury in order to complete the registration process.

### 2.7.1 UserInformation

```
<?xml version="1.0" encoding="utf-8"?>
<soap:Envelope xmlns:xsi="http://www.w3.org/2001/XMLSchema-instance"
xmlns:xsd="http://www.w3.org/2001/XMLSchema"
xmlns:soap="http://schemas.xmlsoap.org/soap/envelope/">
  <soap:Body>
    <CitizenPINRegistration
xmlns="http://etie.hacienda.gobierno.pr/EtieServices/EtieServices">
      <UserInformation>
        <UserType>string</UserType>
        <TaxPayerSSNo>string</TaxPayerSSNo>
        <SpouseSSNo>string</SpouseSSNo>
        <PIN>string</PIN>
        <Name>string</Name>
        <LastName>string</LastName>
        <SecondLastName>string</SecondLastName>
        <SocialSecurity>string</SocialSecurity>
        <UserName>string</UserName>
        <Password>string</Password>
        <HomeLine1>string</HomeLine1>
        <HomeLine2>string</HomeLine2>
        <HomeState>string</HomeState>
        <HomeCity>string</HomeCity>
        <HomeZip5>string</HomeZip5>
        <HomeZip4>string</HomeZip4>
        <PostalLine1>string</PostalLine1>
        <PostalLine2>string</PostalLine2>
        <PostalCity>string</PostalCity>
        <PostalState>string</PostalState>
        <PostalZip5>string</PostalZip5>
        <PostalZip4>string</PostalZip4>
        <Phone>string</Phone>
        <Fax>string</Fax>
        <Email>string</Email>
      </UserInformation>
    </CitizenPINRegistration>
  </soap:Body>
</soap:Envelope>
```

```

<SoftwareVendorId>string</SoftwareVendorId>
<SoftwareVendorPassword>string</SoftwareVendorPassword>
<SoftwareCertificate>string</SoftwareCertificate>
</UserInformation>
</CitizenPINRegistration>
</soap:Body>
</soap:Envelope>

```

| Field          | Description  | Type   |
|----------------|--|--------|
| UserType       | Must indicate who is registering. Possible options are: TaxPayer, SpouseTaxPayer.  | String |
| TaxPayerSSNo   | The taxpayer's social security number.   | String |
| SpouseSSNo     | The taxpayer's spouse's social security number.  | String |
| PIN            | The number assigned by the Department of the Treasury in the returns booklet sent to the taxpayer's postal address.  | String |
| Name           | The taxpayer's first name as it was submitted in the previous tax year return.   | String |
| LastName       | The taxpayer's last name as it was submitted in the previous tax year return.  | String |
| SecondLastName | The taxpayer's second last name (Mother's maiden name) as it was submitted in the previous tax year return.  | String |
| SocialSecurity | The taxpayer's social security number.   | String |
| PostalLine1    | The postal address first line. Address Line 1 is used to provide an apartment, suite number or urbanization name, if applicable. If not applicable, include the open and close tag with no input. Maximum characters allowed: 40 | String |
| PostalLine2    | The postal address second line. Street name or number. Maximum characters allowed: 40  | String |
| PostalCity     | The postal address City name. Maximum characters allowed: 20   | String |
| PostalState    | The postal address State. Maximum characters allowed: 2  | String |



| <b>Field</b>           | <b>Description</b>  | <b>Type</b> |
|------------------------|---|-------------|
| PostalZip5             | The postal address zip code.<br>Maximum characters allowed: 5   | String      |
| PostalZip4             | The postal address zip+4.<br>Maximum characters allowed: 4  | String      |
| HomeLine1              | The residential address first line. Address Line 1 is used to provide an apartment, suite number or urbanization name, if applicable. If not applicable, include the open and close tag with no input. Maximum characters allowed: 40 | String      |
| HomeLine2              | The residential address second line. Street name or number. Maximum characters allowed: 40  | String      |
| HomeCity               | The residential address City name. Maximum characters allowed: 20   | String      |
| HomeState              | The residential address State. Maximum characters allowed: 2  | String      |
| HomeZip5               | The residential address zip code. Maximum characters allowed: 5   | String      |
| HomeZip4               | The residential address zip+4. Maximum characters allowed: 4  | String      |
| Phone                  | The taxpayer's phone number, including area code.   | String      |
| Fax                    | The taxpayer's fax number, including area code.   | String      |
| Username               | The user name registered in the Department of the Treasury.   | String      |
| UserPassword           | The password associated to the user name.   | String      |
| Email                  | The taxpayer's e-mail address. It will be used to communicate with the taxpayer.  | String      |
| SoftwareVendorID       | The company name as registered in the Department of the Treasury.   | String      |
| SoftwareVendorPassword | The password provided by the Department of the Treasury when registered.  | String      |
| SoftwareCertificate    | The certificate number issued by the Department of the Treasury for each software version and form combination.   | String      |

**Note:** For United States Postal Service addressing standards please refer to Publication 28 (<http://pe.usps.gov/text/pub28/welcome.htm>).

## 2.7.2 Citizen Registration Response

```
<?xml version="1.0" encoding="utf-8"?>
<soap:Envelope xmlns:xsi="http://www.w3.org/2001/XMLSchema-instance"
xmlns:xsd="http://www.w3.org/2001/XMLSchema"
xmlns:soap="http://schemas.xmlsoap.org/soap/envelope/">
  <soap:Body>
    <CitizenPINRegistrationResponse
xmlns="http://etie.hacienda.gobierno.pr/EtieServices/EtieServices">
      <CitizenPINRegistrationResult>
        <ResponseCode>string</ResponseCode>
        <ResponseMessage>string</ResponseMessage>
        <ReceiptNumber>string</ReceiptNumber>
        <XmlData>xml</XmlData>
      </CitizenPINRegistrationResult>
    </CitizenPINRegistrationResponse>
  </soap:Body>
</soap:Envelope>
```

| Field           | Description   | Type   |
|-----------------|---|--------|
| ResponseCode    | See Response Code Table.  | Int    |
| ResponseMessage | See Response Code Table..   | String |
| ReceiptNumber   | A unique confirmation number that serves as evidence that the registration was completed.<br>Null if the Registration was unsuccessful. | String |

### 3. E-TIE VB.Net Implementation Example

---

#### 3.1 Login and Upload

```
Dim WSPProcessTransaction As New ETieServices.EtieServices
    Dim Security As New ETieServices.EtieSecurity
    Dim ServiceTiket As New ETieServices.ServiceTicket
    Dim ObjAutHeader As New ETieServices.AuthHeader
    Dim MyResponse As New ETieServices.Response
    Dim xmlstring As ReadStreamFromFile_Structure
    With Security
        .SoftwareVendorId = "ACME Soft"
        .SoftwareVendorPassword = "abcde0999"
        .SoftwareCertificate = "xswyhn9a"
        .SoftwareVersion = "1.0"
        .FormVersion = "ShortForm2008"
        .UserId = "juandelpueblo"
        .UserPassword = "bluehouse"
    End With
    ServiceTiket = WSPProcessTransaction.Login(Security)
    If ServiceTiket.IsAuthenticated Then
        ObjAutHeader = New ETieServices.AuthHeader
        ObjAutHeader.SessionKey = ServiceTiket.SessionKey
        ObjAutHeader.SessionRole = ServiceTiket.SessionRole
        WSPProcessTransaction.AuthHeaderValue = ObjAutHeader
        xmlstring = ReadStreamFromFile("c:\...\ShortForm2008.xml")
        If xmlstring.ErrorCode = 0 Then
            MyResponse = WSPProcessTransaction.Upload(xmlstring.documentData)
            If MyResponse.ResponseCode = 0 Then
                Response.Write(MyResponse.ResponseMessage.ToString
                & "<br><br>")
            Response.Write("Confirmation No:" + MyResponse.ConfirmationNumber)
```

```
        Else
            Response.Write(MyResponse.ResponseCode.ToString &
" <br>")
            Response.Write(MyResponse.ResponseMessage.ToString)
        End If
    Else
        'Error
    End If
End If
End Sub
```

## 4. Tables

### 4.1 Response Codes

The following table describes the codes that E-TIE will return during the electronic filing process. The codes are classified as internal or external depending on whether the circumstances require a response or action from the taxpayer or vendor or from the Department. Each code requires that a message be displayed to the taxpayer. The specific bilingual message that must be displayed is provided, when applicable.

| <b>Error Code</b> | <b>Description</b>              | <b>Response</b>  | <b>Type</b> |
|-------------------|---------------------------------|--|-------------|
| 0                 | Successful                      | Exitoso / Successful   | Internal    |
| -100              | Software Login Failed           | Programa no autorizado para radicación electrónica. Favor de comunicarse con el proveedor de su programa. / The software is not authorized for electronic filing. Please contact the software provider.  | External    |
| -101              | User Login Failed               | El nombre de usuario o contraseña no es válido. Si se esta registrando por primera vez, verifique que la contraseña tenga al menos 7 caracteres. / The user name or password is not valid. If registering for the first time, check if the password was at least 7 digits. | External    |
| -102              | Session Expired                 | Su sesión ha expirado. / Session has expired.  | External    |
| -103              | Form does Not Match Certificate | El formulario no esta certificado. Favor comunicarse con el proveedor de su programa. / Form does not match certificate. Please contact the software provider.   | External    |
| -104              | Certificate Expired             | El certificado del programa ha expirado. Favor comunicarse con el proveedor de su programa. / The software certificate has expired. Please contact the software provider.  | External    |
| -105              | Invalid Certificate             | El certificado del programa no es válido. Favor comunicarse con el proveedor de su programa. / The software certificate is not valid. Please contact the software provider.  | External    |
| -107              | Invalid Token Information       | Su sesión ha expirado. / Session has expired.  | External    |

| Error Code | Description                | Response  | Type     |
|------------|----------------------------|---|----------|
| -108       | Error Saving Token Session | Estamos confrontando problemas técnicos. Por favor intente más tarde. / We are experiencing technical problems. Please try again later.   | External |
| -109       | Refund Amount Error        | Información de reintegro del año contributivo 2007 no coincide con los récords del Departamento de Hacienda. Verifique la cantidad que entró o puede comunicarse con el Departamento al (787) 722-0216. Luego de seleccionar su lenguaje, oprima la opción 2, Contribución sobre Ingresos como Individuo y después seleccione la opción 7, Orientación o Consultas de Ley. / The 2007 taxable year refund information does not match the Treasury Department's records. Verify the amount entered or you can contact the Department at (787) 722-0216. After selecting your language, press option 2, Individual Income Tax, and then select option 7, Orientation or Law Advise. | External |
| -110       | Tax Determined Error       | Contribución determinada del año contributivo 2007 no coincide con los récords del Departamento de Hacienda. Verifique la cantidad que entró o puede comunicarse con el Departamento al (787) 722-0216. Luego de seleccionar su lenguaje, oprima la opción 2, Contribución sobre Ingresos como Individuo y después seleccione la opción 7, Orientación o Consultas de Ley. / The 2007 taxable year tax determined does not match the Treasury Department's records. Verify the amount entered or you can contact the Department at (787) 722-0216. After selecting your language, press option 2, Individual Income Tax, and then select option 7, Orientation or Law Advise.     | External |

| <b>Error Code</b>                  | <b>Description</b>                 | <b>Response</b>   | <b>Type</b> |
|------------------------------------|------------------------------------|---|-------------|
| -111                               | Error Matching Name                | Número de seguro social o nombre del contribuyente no coincide con los récords del Departamento de Hacienda. Verifique la cantidad que entró o puede comunicarse con el Departamento al (787) 722-0216. Luego de seleccionar su lenguaje, oprima la opción 2, Contribución sobre Ingresos como Individuo y después seleccione la opción 7, Orientación o Consultas de Ley. / Taxpayer SSN or name does not match the Treasury Department's records. Verify the amount entered or you can contact the Department at (787) 722-0216. After selecting your language, press option 2, Individual Income Tax, and then select option 7, Orientation or Law Advise. | External    |
| <b>Application Interface Error</b> |                                    |   |             |
| -112101                            | Invalid Action Code                | Estamos confrontando problemas técnicos. Por favor intente mas tarde / We are experiencing technical problems. Please try again later.  | Internal    |
| -112102                            | Communication Error                | Estamos confrontando problemas técnicos. Por favor intente más tarde / We are experiencing technical problems. Please try again later.  | Internal    |
| -112103                            | Invalid Input Field Account Number | Número de Seguro Social inválido. / Invalid Social Security number.   | External    |
| -112104                            | Taxpayer Filed 2008 Tax Form       | Según los récords del Departamento de Hacienda, ya existe una planilla radicada para este contribuyente. Para corroborar esta información, se puede comunicar con el personal de apoyo técnico al (787) 721-2020, extensiones 2662, 2663 ó 2664. / According to the Treasury Department's records, a tax return has already been filed for the taxpayer. To validate this information, you may contact the technical assistance personnel at (787) 721-2020, extensions 2662, 2663 or 2664.   | External    |

| <b>Error Code</b>                | <b>Description</b>               | <b>Response</b>   | <b>Type</b> |
|----------------------------------|----------------------------------|---|-------------|
| -112105                          | Taxpayer Not Filed 2007 Tax Form | No aparece planilla radicada para el año contributivo 2007. Deberá rendir su planilla en papel. / No return is shown as filed for taxable year 2007. You must file your return in paper form. | External    |
| <b>Serial Data File Error</b>    |                                  |   |             |
| -112201                          | File Unavailable                 | Estamos confrontando problemas técnicos. Por favor intente más tarde / We are experiencing technical problems. Please try again later.  | Internal    |
| -112202                          | Accessing File                   | Estamos confrontando problemas técnicos. Por favor intente más tarde / We are experiencing technical problems. Please try again later.  | Internal    |
| -112203                          | Read File                        | Estamos confrontando problemas técnicos. Por favor intente más tarde / We are experiencing technical problems. Please try again later.  | Internal    |
| <b>Financial Data File Error</b> |                                  |   |             |
| -112301                          | File Unavailable                 | Estamos confrontando problemas técnicos. Por favor intente más tarde / We are experiencing technical problems. Please try again later.  | Internal    |
| -112302                          | Accessing File                   | Estamos confrontando problemas técnicos. Por favor intente más tarde / We are experiencing technical problems. Please try again later.  | Internal    |
| -112303                          | Read File                        | Estamos confrontando problemas técnicos. Por favor intente más tarde / We are experiencing technical problems. Please try again later.  | Internal    |
| <b>RPC Service Error</b>         |                                  |   |             |
| -112501                          | RPC Not Available                | RPC no disponible. Favor de notificar al (787) 721-2020, extensiones 2662, 2663 ó 2664. / RPC not available. Please notify at (787) 721-2020, extensions 2662, 2663 or 2664.                  | Internal    |
| <b>Spouse Data File Error</b>    |                                  |   |             |



| <b>Error Code</b>        | <b>Description</b>    | <b>Response</b>   | <b>Type</b> |
|--------------------------|-----------------------|---|-------------|
| -112601                  | File Unavailable      | Estamos confrontando problemas técnicos. Por favor intente más tarde / We are experiencing technical problems. Please try again later.  | Internal    |
| -112602                  | Accessing File        | Estamos confrontando problemas técnicos. Por favor intente más tarde / We are experiencing technical problems. Please try again later.  | Internal    |
| -112603                  | Read File             | Estamos confrontando problemas técnicos. Por favor intente más tarde / We are experiencing technical problems. Please try again later.  | Internal    |
| <b>PIN Number Errors</b> |                       |   |             |
| -112901                  | Invalid Request       | El Número de Identificación Personal (PIN) es inválido. / The Personal Identification Number (PIN) is invalid.  | External    |
| -112902                  | Accessing File        | Estamos confrontando problemas técnicos. Por favor intente más tarde / We are experiencing technical problems. Please try again later.  | Internal    |
| -112903                  | Read File             | Estamos confrontando problemas técnicos. Por favor intente más tarde / We are experiencing technical problems. Please try again later.  | Internal    |
| -112904                  | Add Record            | Estamos confrontando problemas técnicos. Por favor intente más tarde / We are experiencing technical problems. Please try again later.  | Internal    |
| -112905                  | Update Record         | Estamos confrontando problemas técnicos. Por favor intente más tarde / We are experiencing technical problems. Please try again later.  | Internal    |
| -112906                  | PIN Already Validated | El Número de Identificación Personal (PIN) ya fue utilizado. Verifique que haya entrado el PIN correctamente o comuníquese con el personal de apoyo técnico al (787) 721-2020, extensiones 2662, 2663 ó 2664. / The Personal Identification Number (PIN) has been used. Check if you entered the PIN correctly or call the technical assistance personnel at (787) 721-2020, extensions 2662, 2663 or 2664. | External    |

| <b>Error Code</b> | <b>Description</b>   | <b>Response</b>   | <b>Type</b> |
|-------------------|--|---|-------------|
| -112907           | Spouse PIN Already Validated or Taxpayer PIN Not Validated | El Número de Identificación Personal (PIN) del cónyuge ya fue utilizado. Verifique que haya entrado el PIN correctamente o comuníquese con el personal de apoyo técnico al (787) 721-2020, extensiones 2662, 2663 ó 2664. / The Personal Identification Number (PIN) for the spouse has been used. Check if you entered the PIN correctly or call the technical assistance personnel at (787) 721-2020, extensions 2662, 2663 or 2664.  | External    |
| -113              | User already Filed Tax Return for this Taxable Year        | Según los récords del Departamento de Hacienda, ya existe una planilla radicada electrónicamente para este contribuyente. Para corroborar esta información, se puede comunicar con el personal de apoyo técnico al (787) 721-2020, extensiones 2662, 2663 ó 2664. / According to the Treasury Department's records, a tax return has already been electronically filed for the taxpayer. To validate this information, you may contact the technical assistance personnel at (787) 721-2020, extensions 2662, 2663 or 2664. | External    |
| -114              | Payment Error  | Error en la información de pago. / Error in the payment data.   | External    |
| -115              | Inserting User Error                                       | Estamos confrontando algunas dificultades. Por favor intente más tarde. / We are experiencing some difficulties. Please try again later.  | External    |

| Error Code | Description                       | Response   | Type     |
|------------|-----------------------------------|--|----------|
| -116       | Invalid Previous Year Information | <p>La información del año contributivo 2007 no concuerda con los récords del Departamento de Hacienda. Verifique la cantidad que entró o puede comunicarse con el Departamento al (787) 722-0216. Luego de seleccionar su lenguaje, oprima la opción 2, Contribución sobre Ingresos como Individuo y después seleccione la opción 7, Orientación o Consultas de Ley. / The 2007 taxable year information does not match the Treasury Department's records. Verify the amount entered or you can contact the Department at (787) 722-0216. After selecting your language, press option 2, Individual Income Tax, and then select option 7, Orientation or Law Advise.</p> | External |
| -117       | Invalid PIN Information           | <p>El Número de Identificación Personal (PIN) y el número de Seguro Social no concuerdan con los récords del Departamento de Hacienda. Para corroborar esta información, se puede comunicar con el personal de apoyo técnico al (787) 721-2020, extensiones 2662, 2663 ó 2664. / The Personal Identification Number (PIN) and Social Security number do not match the Treasury Department's records. To validate this information, you may contact the technical assistance personnel at (787) 721-2020, extensions 2662, 2663 or 2664.</p>  | External |

| <b>Error Code</b> | <b>Description</b>                   | <b>Response</b>   | <b>Type</b> |
|-------------------|--------------------------------------|---|-------------|
| -118              | Invalid Spouse PIN Info              | El Número de Identificación Personal (PIN) y el número de Seguro Social del cónyuge no concuerdan con los récords del Departamento de Hacienda. Para corroborar esta información, se puede comunicar con el personal de apoyo técnico al (787) 721-2020, extensiones 2662, 2663 ó 2664. / The spouse's Personal Identification Number (PIN) and Social Security number do not match the Treasury Department's records. To validate this information, you may contact the technical assistance personnel at (787) 721-2020, extensions 2662, 2663 or 2664. | External    |
| -119*             | Invalid PIN Information Update       | El proceso de registro no pudo completarse. Favor de registrarse nuevamente. / The registration process was not completed. Please register again.   | Internal    |
| -120*             | Invalid Spouse Information Update    | El proceso de registro del cónyuge no pudo completarse. Favor de registrarse nuevamente. / The spouse's registration process was not completed. Please register again.  | Internal    |
| -121              | Invalid Manifest                     | La cantidad de entradas especificadas en el manifiesto no concuerda con la recibida. / The amount of entries specified in the manifest does not match with the amount received.   | Internal    |
| -122              | Invalid Merchant Registration Number | El número de registro de comerciante no coincide con nuestros récords. / The merchant registration number does not match our records.   | External    |
| -128              | Membership (Validation)              | Estamos confrontando problemas técnicos. Por favor intente más tarde. / We are experiencing technical problems. Please try again later.   | Internal    |
| -200              | Invalid XML Format                   | Formato de planilla inválido. Favor comunicarse con el proveedor de su programa. / Tax return format invalid. Please contact the software provider.   | External    |

| Error Code | Description                        | Response   | Type     |
|------------|------------------------------------|--|----------|
| -300       | Windmill Already Claimed           | <p>La deducción de molinos de viento fue reclamada en un periodo contributivo anterior. Favor corregir y tratar nuevamente su proceso de radicación. / The windmills expense deduction has been claimed in a previous taxable year. Please review and correct the information and re-start the submission process.</p> <p>Si usted entiende que tiene derecho a reclamar esta deducción, favor de rendir su planilla en papel. / If you understand that you are allowed to claim this deduction, please file a paper return.</p>     | External |
| -301       | Solar Equipment Claimed            | <p>La deducción de equipo solar fue reclamada en un periodo contributivo anterior. Favor corregir y tratar nuevamente su proceso de radicación. / The solar equipment deduction has been claimed in a previous taxable year. Please review and correct the information and re-start the submission process.</p> <p>Si usted entiende que tiene derecho a reclamar esta deducción, favor de rendir su planilla en papel. / If you understand that you are allowed to claim this deduction, please file a paper return.</p>            | External |
| -302       | Computer Equipment Already Claimed | <p>La deducción de compra de computadora fue reclamada en un periodo contributivo anterior. Favor corregir y tratar nuevamente su proceso de radicación. / The personal computer deduction has been claimed in a previous taxable year. Please review and correct the information and re-start the submission process.</p> <p>Si usted entiende que tiene derecho a reclamar esta deducción, favor de rendir su planilla en papel. / If you understand that you are allowed to claim this deduction, please file a paper return.</p> | External |

| <b>Error Code</b>  | <b>Description</b>     | <b>Response</b>   | <b>Type</b> |
|--|------------------------|---|-------------|
| -303   | Invalid Routing Number | El número de ruta del banco es inválido. Favor corregir y tratar nuevamente su proceso de radicación. / The routing number is invalid. Please review and correct the information and re-start the submission process. | External    |
| -304   | IVU Mathematical Error | La suma de las cantidades de los campos no concuerda con los totales y subtotales del formulario. / The sum of the field amounts does not match the total and subtotals in the return.                                | External    |
| -900   | Error getting schema   | Estamos confrontando problemas técnicos. Por favor intente más tarde. / We are experiencing technical problems. Please try again later.   | Internal    |
| -901   | Error savings XML doc  | Estamos confrontando problemas técnicos. Por favor intente más tarde. / We are experiencing technical problems. Please try again later.   | Internal    |
| -902   | Database Error         | Estamos confrontando problemas técnicos. Por favor intente más tarde / We are experiencing technical problems. Please try again later.  | Internal    |
| -903   | Error Inserting User   | El nombre de usuario existe. Por favor intente con otro y verifique que tenga al menos 7 caracteres. / The username already exist. Please try another username and make sure that it has at least 7 characters.       | Internal    |
| -904   | Schema Internal Error  | Estamos confrontando problemas técnicos. Por favor intente más tarde. / We are confronting technical problems. Please try later.  | Internal    |
| -905   | Error Accessing OP     | Estamos confrontando problemas técnicos. Por favor intente más tarde. / We are experiencing technical problems. Please try again later.   | Internal    |
| -990100<br>-990101<br>-990102<br>-990103<br>-990104<br>-990105 | General Exception      | Estamos confrontando problemas técnicos. Por favor intente más tarde. / We are experiencing technical problems. Please try again later.   | Internal    |
| <b>E-TIE Services Error</b>                                    |                        |   |             |

| <b>Error Code</b>   | <b>Description</b> | <b>Response</b>  | <b>Type</b> |
|---|--------------------|--|-------------|
| -990200<br>-990201<br>-990202<br>-990202<br>-990203<br>-990204<br>-990205 | General Exception  | Estamos confrontando problemas técnicos. Por favor intente más tarde.<br>/ We are experiencing technical problems. Please try again later. | Internal    |

\* When these errors occur, the taxpayer must register again due to internal errors.